



TANK & PLANT CONSTRUCTION

40 years of quality
from Germany





Table of contents

The company	Page 5
Products and industries	Page 7
Materials and dimensions	Page 9
Process technologies	Page 11
Welding machines	Page 13
Certificates	Page 15
Quality	Page 17
Full service	Page 21
Tank farms	Page 23
Logistics	Page 27
Flue gas scrubbers	Page 33
Storage tanks	Page 35
References	Page 39





The company

High-Tech made in Germany

Müller Tank & Plant Construction represents a journey from a family business to a high-tech company and impresses you with 40 years of experience and outstanding quality.

Our company is characterised by our proven full service – from planning and detailed consultancy to production, assembly and commissioning, we support you as your competent and reliable partner. And this is nothing new. Müller Tank & Plant Construction is living proof that tradition and modernity complement one another perfectly. We are committed to traditional values like quality, reliability and care, in order to impress you with our work.

Since its foundation by Walter Müller in 1950, the company has overcome difficult times, reinvented itself and always successfully held its own on the market. With the help of outstandingly trained staff, innovative production techniques and modern materials, we have always held a leading position among the competition. As a customer, you benefit from the expertise and experience with which we execute your projects quickly and successfully.



Company foundation	1950 by Walter Müller
Managing Director	Oliver Müller
Headquarters	D-76593 Gernsbach, Baccaratstraße 33-35
Workforce	25 staff
Production hall	1,400m ²
Assembly areas	1,700m ²
Office building	300m ²



Products

- ▶ Pressure vessels
- ▶ Agitator vessels
- ▶ Large-scale vessels
- ▶ Silos
- ▶ Milk churns
- ▶ Stack towers
- ▶ Storage silos
- ▶ Storage tanks and storage vessels
- ▶ Vessels for wastewater treatment:
 - ▶ Anaerobic reactors
 - ▶ MBBR
 - ▶ Biobed reactors
 - ▶ Cascades

Industries

- ▶ Paper industry
- ▶ Oil and gas industry
- ▶ Energy sector (biodiesel, ethanol, urea, heat accumulators, buffer tanks)
- ▶ Chemicals industry
- ▶ Pulp industry
- ▶ Wastewater industry
- ▶ Flue gas scrubbing





Materials

Stainless steel

- ▶ 1.4301
- ▶ 1.4541
- ▶ 1.4571
- ▶ 1.4404
- ▶ 1.4539

Duplex steel

- ▶ 1.4162
- ▶ 1.4362
- ▶ 1.4462

Pressure vessels steel

- ▶ P235
- ▶ P355

Construction steel

- ▶ S235
- ▶ S355

Dimensions

- ▶ For vessels of up to 4.3 metres diameter and 26 metres in height (indoor production)
- ▶ For vessels and plants of up to 20 metres diameter and capacity of up to 6,000 cubic metres (on-site production)



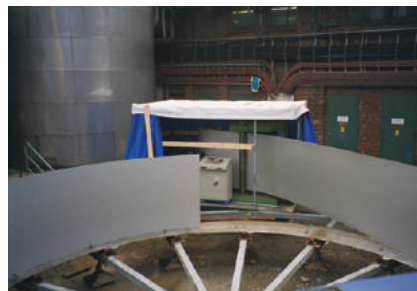


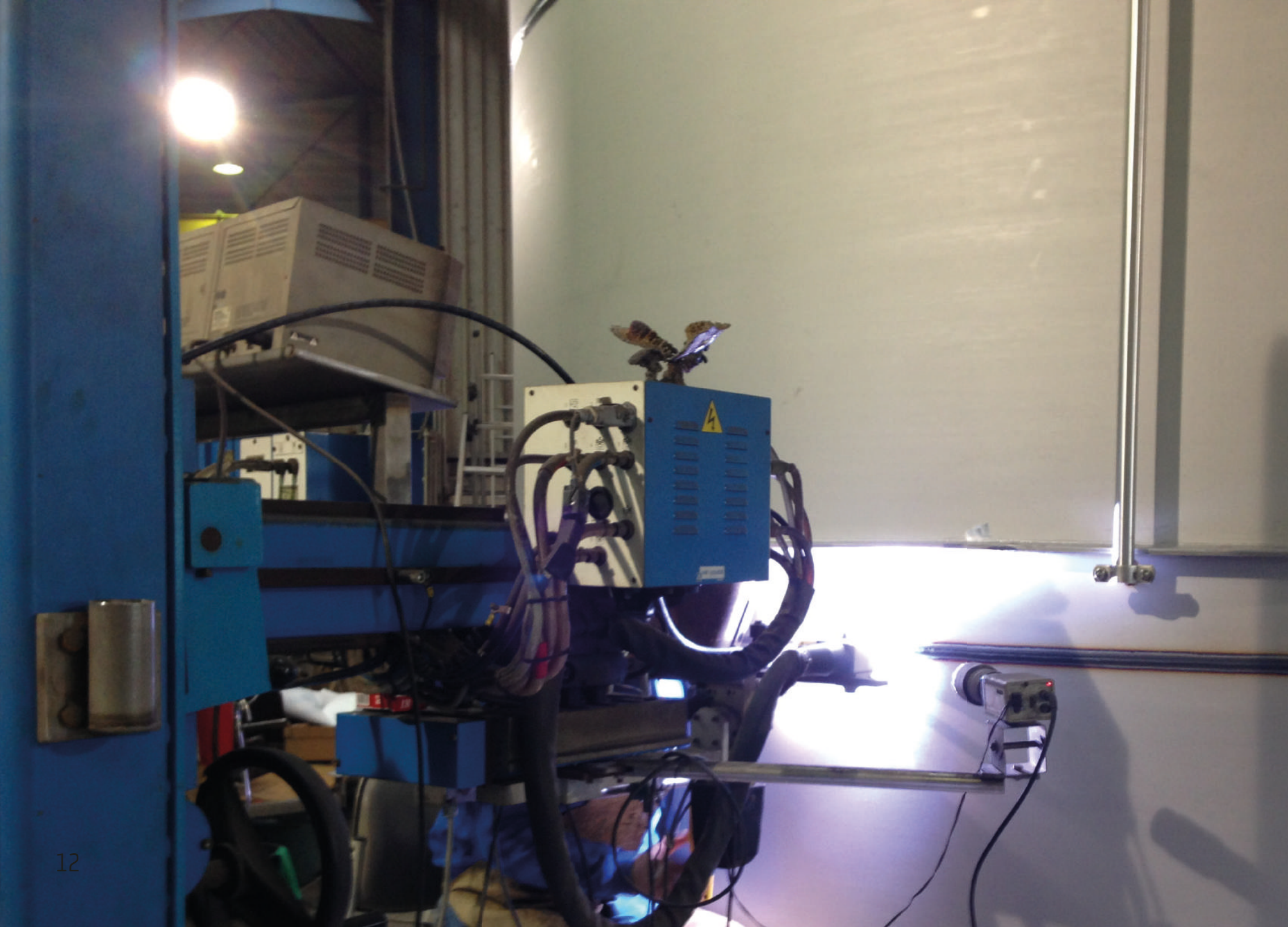
State-of-the-art process technologies

Using the coil building process, we are able to produce vessels with a capacity of up to 6,000 cubic metres, a diameter of 20 metres and a weight of 100 tonnes directly on site.

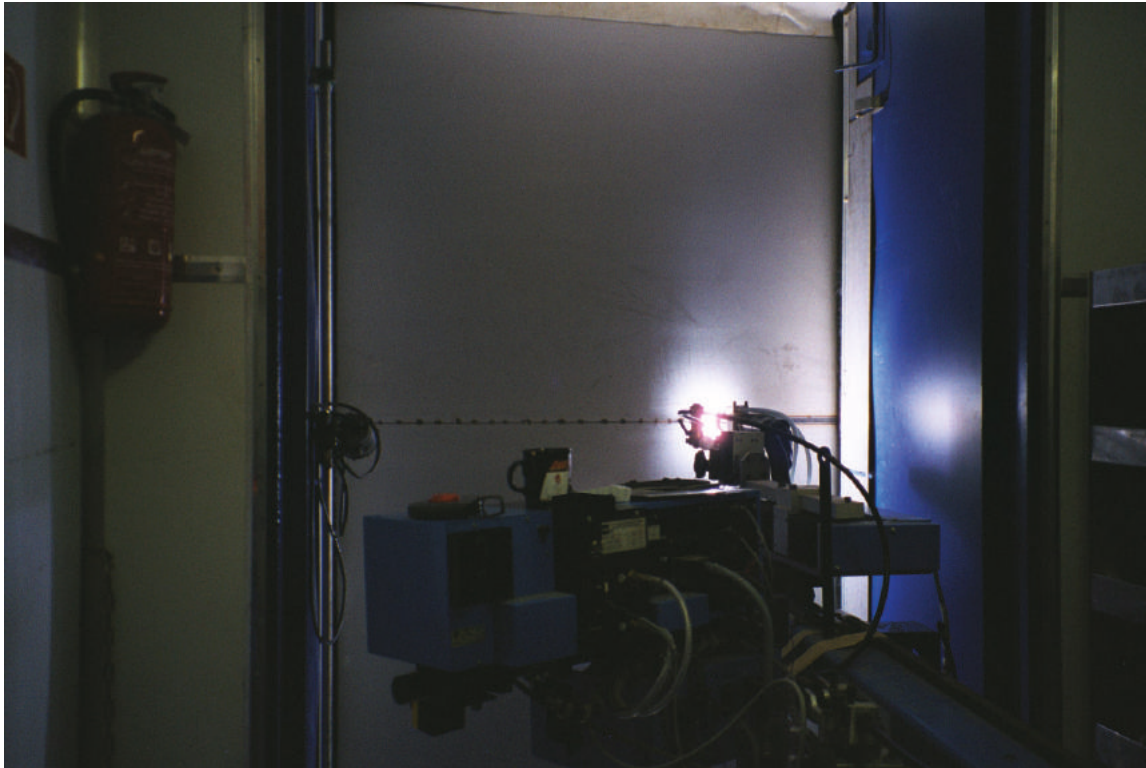
To do this, the coil building machine is delivered in components and constructed on site extremely quickly. We also offer the latest welding processes such as plasma keyhole and TIG pendulum, which reduce assembly times significantly.

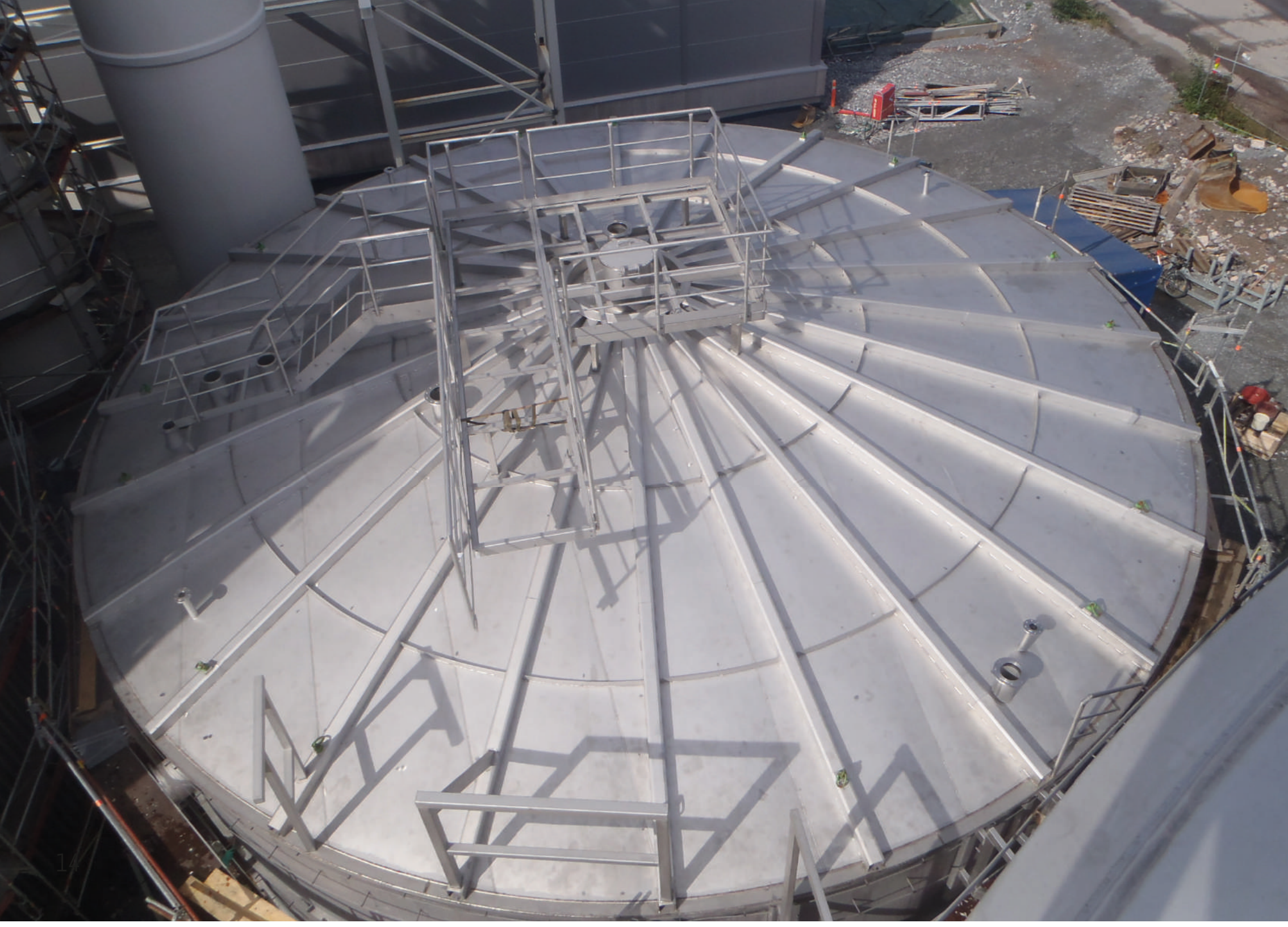
As well as saving time and reducing the number of assembly staff needed, these welding methods also offer our staff excellent safety and efficient working processes.





Welding machines





Certificates

- ▶ Manufacturer in accordance with AD 2000-data sheet HPO since 1988
- ▶ Welding approval in accordance with DIN EN ISO 3834-3 / HP 100R / TRD 201
- ▶ Welding requirements for the production of pressure vessels in accordance with the Pressure Equipment Directive 97/23/EC
- ▶ Welding supervision in accordance with EN ISO 14731 by in-house expert welding engineer (SFI)
- ▶ Certified specialist company in accordance with the German Water Resources Act (WHG)
- ▶ TÜV remarking certificate
- ▶ Certified welder in accordance with EN 287-1





Quality pays

Quality is not a question for us – it is standard. We have made a point of convincing and impressing you with our quality. Our quality management does not start at the completion and finishing stage of our products, but right from the bid phase. Bid phase. You can recognise it by the bid we present to you, which is perfectly tailored to your needs and ideas. It contains the commonly prescribed quality inspections and the trained input of our staff. These staff may not be subject to any provisions, but they offer you a key advantage: our experienced experts spot even the smallest of irregularities and correct them straight away, before problems even arise. Our quality management concludes with punctual handover and our excellent service.

Because we set very high standards for ourselves, we demand them from our suppliers, too. That is why we commit them to the very highest quality standards. That is why we assure you that, at MÜLLER, all inspections are conducted in line with the latest inspection standards, which includes both internal quality assurance and independent external inspection bodies.

We conduct the following quality assurance inspections with external companies, whom we have selected especially for their highest quality standards:

- ▶ Dye penetration testing
- ▶ X-ray testing
- ▶ Magnetic particle testing
- ▶ Ultrasound testing
- ▶ Pressure and strength testing
- ▶ Leak testing







Full service

From customer consultancy to maintenance of the end product

Because our customers' satisfaction is our top priority, our work does not stop when our products are handed over and approved. Our service extends from customer consultancy to production and assembly. On request, we can even coordinate the entire process, from scheduling to final approval by TÜV or other inspection bodies and plant commissioning.

For you, full service means that we produce your ready-to-use plant. Our many years of experience allow us – together with our partners – to hand over a totally ready-to-use plant to you! For a tank farm, for example, this service includes planning, engineering, tank production, piping, machine assembly, electrical engineering and automation.

Needless to say, we are also happy to remain available as your competent partner for maintenance and repair of your plant.



Tank farm

The construction of a tank farm includes planning, engineering, tank production, piping, machine assembly, electrical engineering and automation.

Our company uses the latest CAD software in 3D and 2D for plant planning.









Bedriftsområde
Avgang forbudt
Hastighetsgrens 40/50

Professional logistics

In our production hall with a total production area of 1,400m², we can produce tanks and vessels with a diameter of up to 4.3 metres and a length of up to 26 metres. Vessels measuring 26 metres in length are produced using semi-automated production methods in our production tower and then removed with a crane once complete. They are usually transported to you by road or sea.

Thanks to our many years of experience and sure instincts, we make sure that our products get to you in immaculate quality.

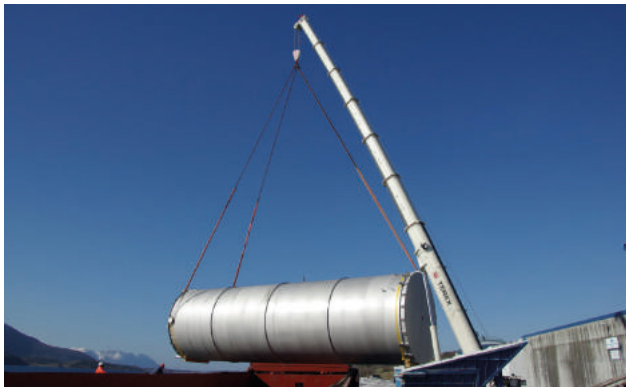
Loading a vessel





Sea transport

We can produce larger projects (diameter of up to 8.5 metres) at an external base directly on the Rhine, allowing the vessels to be transported by sea.



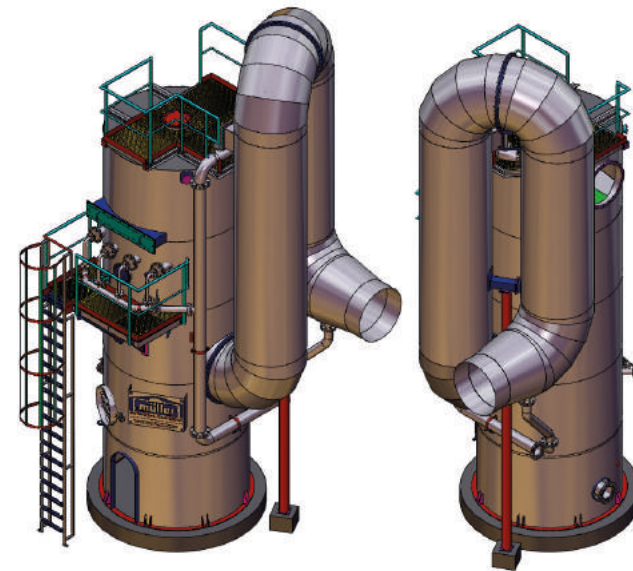
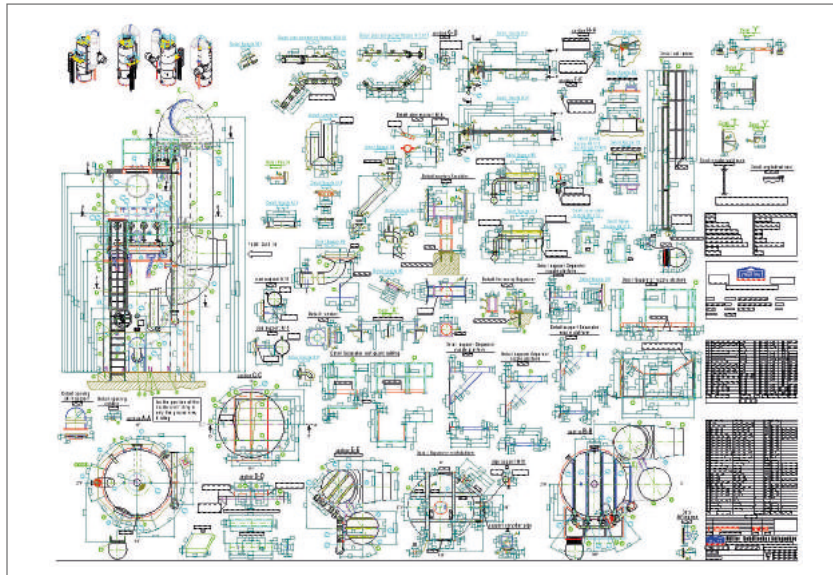
By truck





Flue gas scrubbers

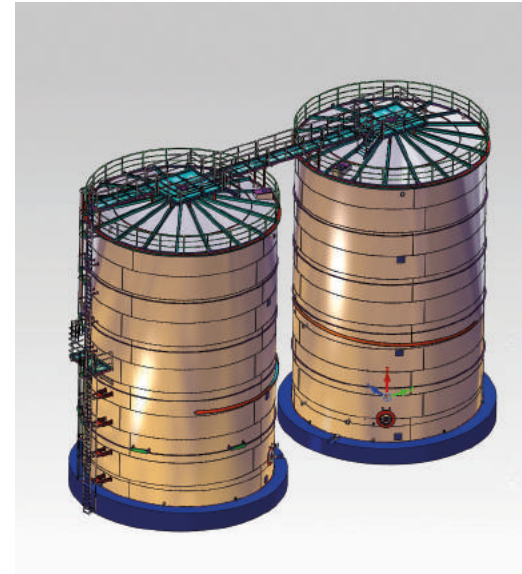
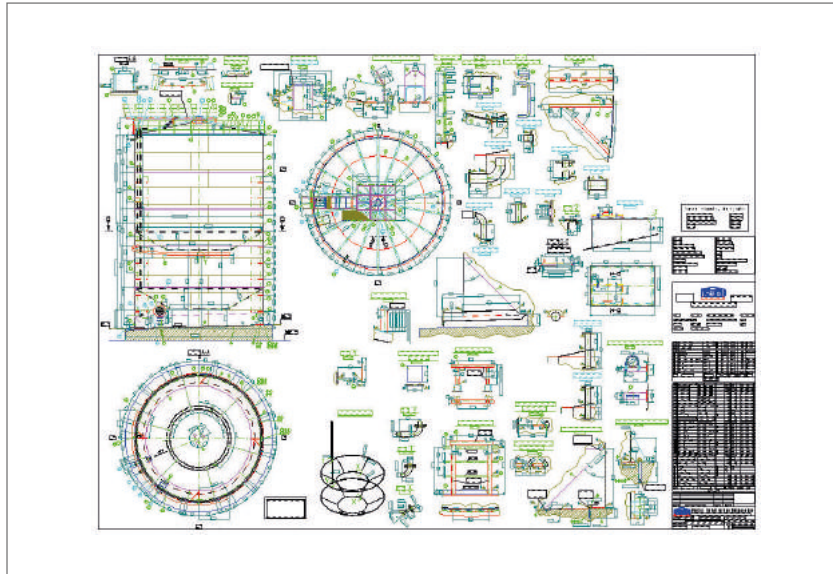
Production drawing & 3D model



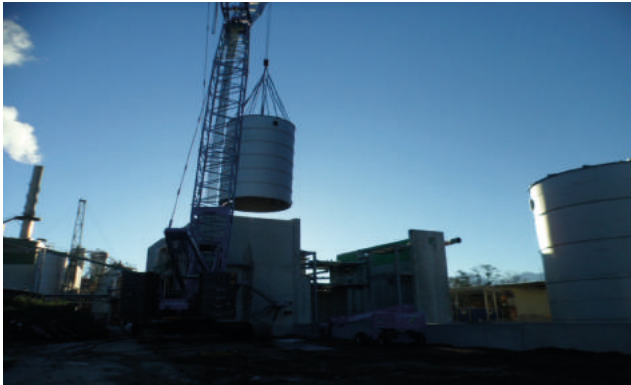


Storage tanks

Production drawing & 3D model









Selected references

- ▶ AUSTROPAPIER
- ▶ BIOTHANE
- ▶ BORREGAARD
- ▶ DAIMLER
- ▶ EGGER
- ▶ E.ON
- ▶ EVONIK INDUSTRIES
- ▶ GLACONCHEMIE
- ▶ HAMBURGER RIEGER
- ▶ HEINZEL PAPER AG
- ▶ JOHNSON MATTHEY
- ▶ KÖLNER
- ▶ KRONOSPAN
- ▶ K&S
- ▶ LENZING
- ▶ MAL
- ▶ MAN
- ▶ MONDI
- ▶ OMYA
- ▶ PEPSICO
- ▶ PGA
- ▶ PROKON
- ▶ ROCHE
- ▶ RWE
- ▶ SAPPI
- ▶ SCA
- ▶ SCHWEIGHOFER FIBER
- ▶ STORAENZO
- ▶ UPM
- ▶ VEOLIA WATER



Müller GmbH & Co. KG
Tank & Plant Construction
Baccaratstrasse 33-35
76593 Gernsbach
Germany

☎ +49 7224 9154-0
✉ +49 7224 9154 39
@ info@mueller-behaelterbau.de
🌐 www.mueller-behaelterbau.de